

***2022/2023 Redistricting Plan
Proposed Harmony High, St. Cloud
High, and Tohopekaliga High Schools
Attendance Zone Boundaries***

***Second Meeting
February 6, 2023***

***Guidelines for
Establishing
Redistricting Committee
and
Calendar for
Establishing
Attendance Zones***

THE SCHOOL BOARD OF OSCEOLA COUNTY, FLORIDA

Guidelines for Establishing Redistricting Committees

SCHOOL COMMITTEES

A redistricting committee representing each school involved in the redistricting process shall be established by the School Advisory Council at each affected school.

Each school committee shall be broadly representative of the school community.

Each school committee shall be composed of five members, one of which shall be an administrator at the school. No more than one of the four remaining members of the committee shall be an employee of the School District of Osceola County.

DISTRICTWIDE COMMITTEE

There shall be a Districtwide Committee established. The structure of the committee shall be as follows:

1. Superintendent;
2. Deputy Superintendent of Human Services, or designee;
3. Assistant Superintendents for Elementary, Middle, and High School Curriculum & Instruction, or designees;
4. Assistant Superintendent for School Operations, or designee;
5. Chief Financial Officer for Business & Finance, or designee;
6. Chief Facilities Officer, or designee;
7. Director of Transportation, or designee; and
8. Designated Principals impacted by the redistricting process and their 5-member committees.

**THE SCHOOL BOARD
OF
OSCEOLA COUNTY, FLORIDA**

**Calendar for Establishing Attendance Zones
for Harmony High, St. Cloud High, and Tohopekaliga High Schools
for the 2023/2024 School Year**

- | | |
|----------------------------------|---|
| 01/2023 – 02/2023 | Staff, Principals, and School Advisory Committees meet to discuss attendance zones for Harmony High, St. Cloud High, and Tohopekaliga High schools. |
| 01/17/2023 | School Board meets to set calendar, to adopt guidelines, and to determine if any additional schools will be considered for redistricting this year. |
| 01/23/2023
02/06/2023 | Districtwide Redistricting Committee meets to review data, determine additional needs, and to prepare preliminary plans. Meetings to be held at 6:00 P.M. at the Transportation Department, International Room, 401 Simpson Road, Kissimmee, FL. |
| 01/20/2023
01/29/2023 | Public Hearing Notice to Advertise |
| 02/21/2023 | Public Hearing to adopt high school attendance zone boundaries for the 2023/2024 school year to be held at 6:00 P.M. at the Administrative Complex, 817 Bill Beck Boulevard, Kissimmee, FL. |
| Note: | Additional meetings may be scheduled if necessary or scheduled meetings may be cancelled if they are not required. Dates are subject to change if additional meetings are scheduled or if scheduled meetings are cancelled. |

All proposed attendance zone boundaries can be viewed at each respective school or by visiting, www.osceolaschools.net and then following the steps provided: (1) Departments, (2) Planning Services, (3) Redistricting & School Zoning Information, (4) Redistricting, (5) Harmony High, St. Cloud High, and Tohopekaliga High School Redistricting

***Public Hearing Notice
for Harmony High, St. Cloud High, and
Tohopekaliga High Schools***

**Proposals for Attendance Zones
for Elementary and High Schools
for the 2023/2024 School Year
Osceola District Schools**

In an attempt to balance school populations, seven existing schools serving the Kissimmee, and St. Cloud areas could be affected by redistricting changes.

Representatives (parents and staff) of the existing seven schools, along with district staff were involved in the preparation of the accompanying information.

The School Board of Osceola County will hold a Public Hearing and adopt a plan for attendance zones for the 2023/2024 School Year for the following schools:

Grades K-5: Hickory Tree Elementary and Narcoossee Elementary

**Grades 9-12: Celebration High, Harmony High, Osceola High,
St. Cloud High, and Tohopekaliga High**

The Public Hearing is as follows:

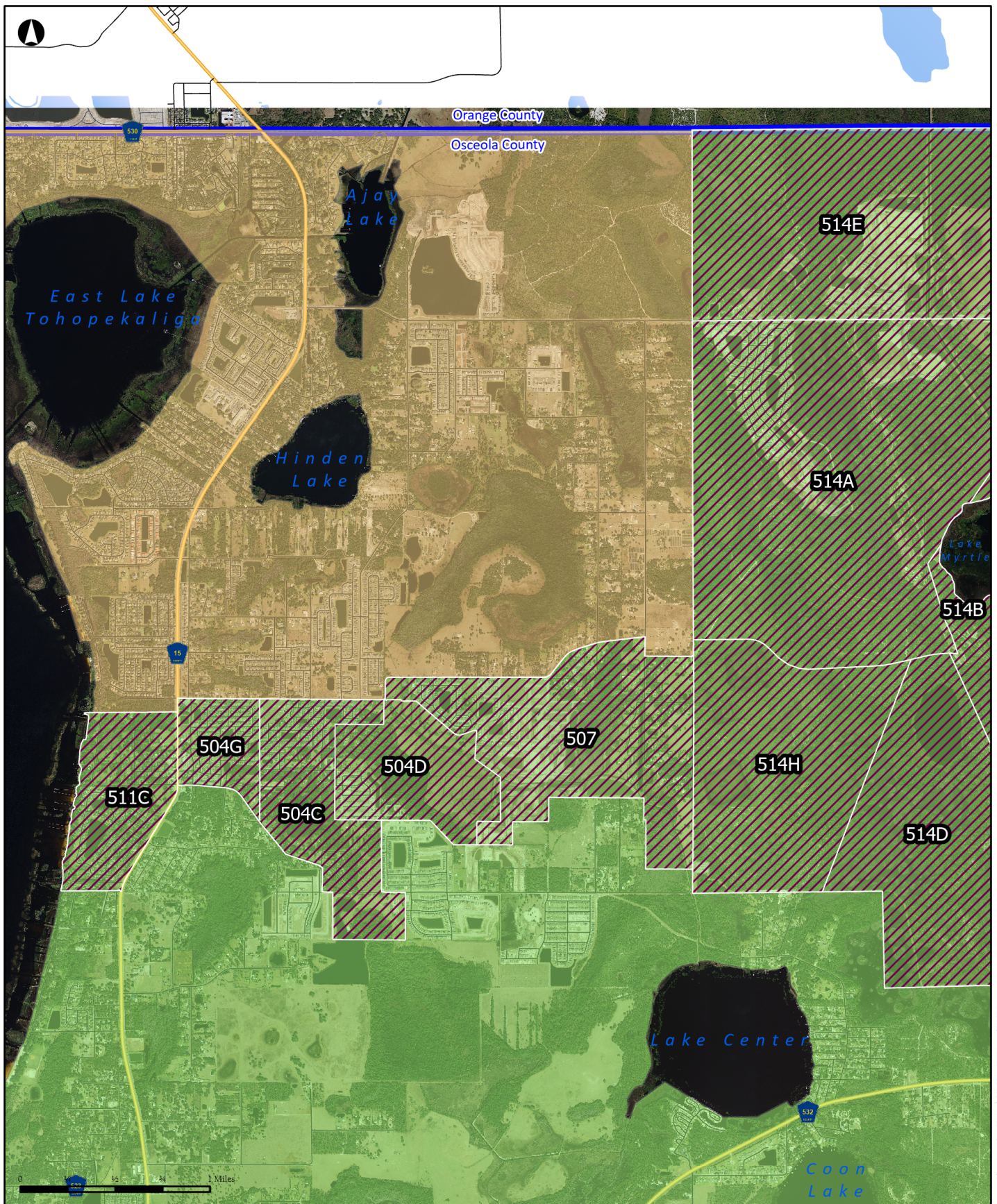
**Public Hearing 6:00 P.M.
February 21, 2023
Central Administrative Center
Board Room
817 Bill Beck Boulevard
Kissimmee, Florida 34741**

All proposed attendance zone boundaries can be viewed at each respective school or by visiting, www.osceolaschools.net and then following the steps provided: (1) Departments, (2) Planning Services, (3) Redistricting & School Zoning Information, (4) Redistricting, and (5) Hickory Tree Elementary, Narcoossee Elementary, Celebration High, Harmony High, Osceola High, St. Cloud High School, and Tohopekaliga High Redistricting.

Osceola Star: 01/20/2023

Orlando Sentinel: 01/29/2023

***2023/2024 Proposed Changes to
Harmony High, St. Cloud High, and
Tohopekaliga High Schools
Attendance Zone Boundaries***



**Proposed Redistricting Area
HRHS to TKHS area zoom**

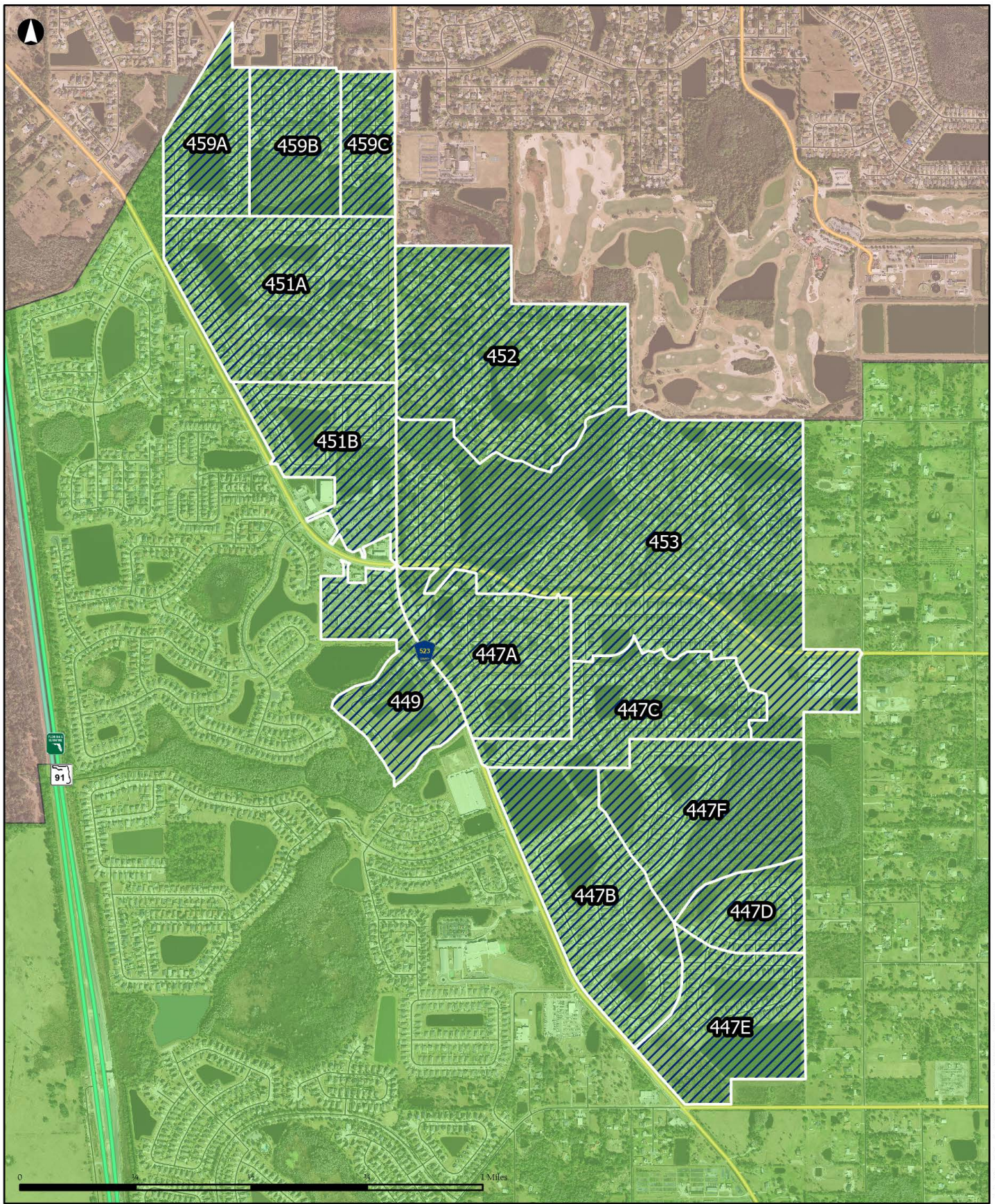
Draft redistricting proposed for SY2324



Planning Services Department
The School District of Osceola County, FL

- Harmony High
- Tohopekaliga High
- Draft_HRHStoTKHS

Disclaimer: All data, information, and maps are provided "as is" without any warranty or representation of accuracy, timeliness, or completeness. The School District of Osceola County, Florida (the "School District") cannot accept any responsibility for errors, omissions, or positional accuracy. The School District specifically disclaims any warranty, either express or implied, including, without limitation, the implied warranties of merchantability and fitness for a particular purpose. The burden of determining accuracy, timeliness, merchantability, and fitness for a particular use rests solely on the requestor, and the requestor assumes all risk as to quality and performance. In no event will the School District or its staff be liable for any direct, indirect, incidental, special, consequential, or other damages, including, without limitation, loss of profit, arising out of the use of the data, information, and maps even if the School District has been advised of the possibility of such damages. The requestor acknowledges and accepts the limitations of the data, information, and maps, including, without limitation, the fact that the data, information, and maps are dynamic and are in a constant state of maintenance, correction, and update.



**Proposed Redistricting Area
HRHS to SCHS area zoom**

Draft redistricting proposed for SY2425



Planning Services Department
The School District of Osceola County, FL

- Harmony High
- St Cloud High
- Draft_HRHS to SCHS

Disclaimer: All data, information, and maps are provided "as is" without any warranty or representation of accuracy, timeliness, or completeness. The School District of Osceola County, Florida (the "School District") cannot accept any responsibility for errors, omissions, or positional accuracy. The School District specifically disclaims any warranty, either express or implied, including, without limitation, the implied warranties of merchantability and fitness for a particular purpose. The burden of determining accuracy, timeliness, merchantability, and fitness for a particular use rests solely on the requestor, and the requestor assumes all risk as to quality and performance. In no event will the School District or its staff be liable for any direct, indirect, incidental, special, consequential, or other damages, including, without limitation, loss of profit, arising out of the use of the data, information, and maps even if the School District has been advised of the possibility of such damages. The requestor acknowledges and accepts the limitations of the data, information, and maps, including, without limitation, the fact that the data, information, and maps are dynamic and are in a constant state of maintenance, correction, and update.

Student Demographics

<i>Proposed School by Study Area</i>			
<i>Study Area</i>	<i>Current HIGH School</i>	<i>Proposed HIGH School</i>	<i>School Year</i>
<i>511C</i>	<i>Harmony High</i>	<i>Tohopekaliga High</i>	<i>2023/2024</i>
<i>504G</i>	<i>Harmony High</i>	<i>Tohopekaliga High</i>	<i>2023/2024</i>
<i>504C</i>	<i>Harmony High</i>	<i>Tohopekaliga High</i>	<i>2023/2024</i>
<i>504D</i>	<i>Harmony High</i>	<i>Tohopekaliga High</i>	<i>2023/2024</i>
<i>507</i>	<i>Harmony High</i>	<i>Tohopekaliga High</i>	<i>2023/2024</i>
<i>514A</i>	<i>Harmony High</i>	<i>Tohopekaliga High</i>	<i>2023/2024</i>
<i>514E</i>	<i>Harmony High</i>	<i>Tohopekaliga High</i>	<i>2023/2024</i>
<i>514C</i>	<i>Harmony High</i>	<i>Tohopekaliga High</i>	<i>2023/2024</i>
<i>514F</i>	<i>Harmony High</i>	<i>Tohopekaliga High</i>	<i>2023/2024</i>
<i>514B</i>	<i>Harmony High</i>	<i>Tohopekaliga High</i>	<i>2023/2024</i>
<i>514D</i>	<i>Harmony High</i>	<i>Tohopekaliga High</i>	<i>2023/2024</i>
<i>514H</i>	<i>Harmony High</i>	<i>Tohopekaliga High</i>	<i>2023/2024</i>
<i>447E</i>	<i>Harmony High</i>	<i>St Cloud High</i>	<i>2024/2025</i>
<i>447D</i>	<i>Harmony High</i>	<i>St. Cloud High</i>	<i>2024/2025</i>
<i>447B</i>	<i>Harmony High</i>	<i>St Cloud High</i>	<i>2024/2025</i>
<i>447F</i>	<i>Harmony High</i>	<i>St Cloud High</i>	<i>2024/2025</i>
<i>447C</i>	<i>Harmony High</i>	<i>St Cloud High</i>	<i>2024/2025</i>
<i>447A</i>	<i>Harmony High</i>	<i>St Cloud High</i>	<i>2024/2025</i>
<i>449</i>	<i>Harmony High</i>	<i>St Cloud High</i>	<i>2024/2025</i>
<i>453</i>	<i>Harmony High</i>	<i>St Cloud High</i>	<i>2024/2025</i>
<i>452</i>	<i>Harmony High</i>	<i>St Cloud High</i>	<i>2024/2025</i>
<i>451B</i>	<i>Harmony High</i>	<i>St Cloud High</i>	<i>2024/2025</i>
<i>451A</i>	<i>Harmony High</i>	<i>St Cloud High</i>	<i>2024/2025</i>
<i>459C</i>	<i>Harmony High</i>	<i>St Cloud High</i>	<i>2024/2025</i>
<i>459B</i>	<i>Harmony High</i>	<i>St Cloud High</i>	<i>2024/2025</i>
<i>459A</i>	<i>Harmony High</i>	<i>St Cloud High</i>	<i>2024/2025</i>

HRHS to TKHS					
Student Counts by Study Area (Oct FTE 2022/23 Students)					
Study Area	9th*	10th	11th	12th	Total
511C	11	7	7	16	41
504G	27	21	23	14	85
504C	13	12	5	16	46
504D	8	15	12	5	40
507	9	13	6	11	39
514A	0	0	0	0	0
514E	0	0	0	0	0
514C	0	0	0	0	0
514F	0	0	0	0	0
514B	0	0	0	0	0
514D	0	0	0	0	0
514H	0	0	0	0	0
Total	68	68	53	62	251

HRHS to SCHS					
Student Counts by Study Area (Oct FTE 2022/23 Students)					
Study Area	9th**	10th*	11th	12th	Total
447E	7	7	9	8	31
447D	3	6	6	6	21
447B	7	9	18	16	50
447F	5	5	5	6	21
447C	5	6	7	14	32
447A	11	9	12	9	41
449	1	1	2	3	7
453	16	15	15	18	64
452	6	4	5	6	21
451B	6	8	13	12	39
451A	9	13	10	10	42
459C	1	4	7	7	19
459B	6	9	13	1	29
459A	7	13	8	11	39
Total	90	109	130	127	456

*Based on Current 2022/2023 8th grade enrollment.

**Based on Current 2022/2023 7th grade enrollment

All counts from the October 14, 2022, Student Geocode

HRHS to TKHS							
Student School of Attendance by Study Area – Current High School							
Enrolled School	511C	504G	504C	504D	507	514***	Total
Incomplete Enrollment	-	-	-	1	-	-	1
Family Empowerment Scholarship	-	2	-	1	-	-	3
Gateway High School	-	1	-	-	-	-	1
Harmony High School	24	40	18	26	22	-	130
NeoCity Academy	-	1	1	-	-	-	2
Osceola Technical College: Kissimmee Campus	-	1	-	-	-	-	1
Osceola Virtual Secondary School	-	-	2	-	-	-	2
Professional and Technical High School	2	1	-	1	1	-	5
St Cloud High School	1	2	-	1	-	-	4
Tohopekaliga High School	3	10	11	1	7	-	32
Zenith Academy	-	-	1	-	-	-	1
Total	30	58	33	31	30	-	182

Student School of Attendance by Study Area – Rising High School							
Enrolled School	511C	504G	504C	504D	507	514***	Total
Incomplete Enrollment	-	-	-	1	-	-	1
Family Empowerment Scholarship	1	-	1	-	-	-	2
Home School	-	-	-	-	1	-	1
Narcoossee Middle School	10	25	11	7	8	-	61
Osceola County School for the Arts	-	-	1	-	-	-	1
Renaissance Charter at Boggy Creek	-	1	-	-	-	-	1
St. Cloud Middle School	-	1	-	-	-	-	1
Total	11	27	13	8	9	-	68

***Study Area 514 sub areas A, B, C, D, E, F, and H
All counts from the October 14, 2022, Student Geocode

HRHS to SCHS													
Student School of Attendance by Study Area – Current High School													
Study Area	Family Empowerment Scholarship	Gateway High School	Harmony High School	NeoCity Academy	Osceola County School for the Arts	Osceola High School	Osceola Virtual Secondary School	Professional and Technical High School	St Cloud High School	Tohopekaliga High School	Victory Charter School	Zenith Academy	Total
447E	2		11					2	2				17
447D	2		9						1				12
447B	4	1	24	2				3					34
447F		2	8						1				11
447C			15				1	2	3				21
447A			19				1		1				21
449			4								1		5
453	1		20	1	1				10				33
452			5			1			5				11
451B	3		18						3	1			25
451A	1		6	1					12				20
459C		1	9	1					3				14
459B	3		6						4			1	14
459A	1		14				1		2			1	19
Total	17	4	168	5	1	1	3	7	47	1	1	2	257

All counts from the October 14, 2022, Student Geocode

HRHS to SCHS																	
Student School of Attendance by Study Area – Rising High School																	
<i>Study Area</i>	<i>BridgePrep Academy of St Cloud</i>	<i>Canoe Creek K-8 School</i>	<i>Creative Inspiration Journey School</i>	<i>Family Empowerment Scholarship</i>	<i>Harmony Middle</i>	<i>Home School</i>	<i>Kissimmee Charter K-8</i>	<i>Narcoossee Middle School</i>	<i>Neptune Middle School</i>	<i>New Beginnings</i>	<i>Osceola County School for the Arts</i>	<i>Osceola Science Charter School</i>	<i>Osceola Virtual Secondary School</i>	<i>Renaissance Charter School at Tapestry</i>	<i>St Cloud Middle School</i>	<i>Virtual Prep Academy of Florida</i>	<i>Total</i>
447E		11	1		1						1						14
447D		8			1												9
447B		7		2	1		1	1	1		2			1			16
447F		8			1				1								10
447C		9		1											3		11
447A	1	15	1	1											2		20
449		1		1													2
453	3	1	2					1			1	1	1		21		31
452		1		1	1										7		10
451B	1	1		1				1		1					9		14
451A				1	1						1				19		22
459C				1											4		5
459B				2											12	1	15
459A	1	1				1									17		20
Total	6	55	4	11	5	1	1	3	2	1	5	1	1	1	92	1	190

All counts from the October 14, 2022, Student Geocode

Projected Enrollment

HRHS to TKHS and SCHS SY2324	School	Plan Area	Year	Grades 9-12	CHOICE Sending	CHOICE Receiving	NET TOTAL 9-12	Functional Capacity	Utilization	Functional Capacity W/ Relocatable	Functional Utilization W/ Relocatable
SB Member: 5	HRHS	10	2023/2024	3,530	629	148	3,049	2,781	110%	2,894	105%
	HRHS	10	2023/2024	3,136	567	148	2,717	2,781	98%	2,894	94%
	HRHS	10	2024/2025	3,040	580	148	2,608	2,781	94%	2,894	90%
	HRHS	10	2025/2026	3,309	594	148	2,863	2,781	103%	2,894	99%
Nova HS to open (students moved TBD)	HRHS	10	2026/2027	3,720	594	148	3,274	2,781	118%	2,894	113%
HRHS to TKHS SY2324	School	Plan Area	Year	Grades 9-12	CHOICE Sending	CHOICE Receiving	NET TOTAL 9-12	Functional Capacity	Utilization	Functional Capacity W/ Relocatable	Functional Utilization W/ Relocatable
SB Member: 5	TKHS	4	2023/2024	2,990	504	276	2,762	2,916	95%	2,916	95%
	TKHS	4	2023/2024	3,277	524	244	2,997	2,916	103%	2,916	103%
	TKHS	4	2024/2025	3,280	486	244	3,038	2,916	104%	2,916	104%
	TKHS	4	2025/2026	3,288	472	244	3,060	2,916	105%	2,916	105%
Nova HS to open (students moved TBD)	TKHS	4	2026/2027	3,336	472	244	3,108	2,916	107%	2,916	107%
HRHS to SCHS SY2425	School	Plan Area	Year	Grades 9-12	CHOICE Sending	CHOICE Receiving	NET TOTAL 9-12	Functional Capacity	Functional Utilization	Functional Capacity W/ Relocatable	Functional Utilization W/ Relocatable
SB Member: 5 Wing Addition +525 StuSta	SCHS	9	2023/2024	2,075	234	489	2,330	2,086	112%	2,229	105%
	SCHS	9	2024/2025	2,037	215	489	2,311	2,587	89%	2,730	85%
	SCHS	9	2024/2025	2,512	257	442	2,697	2,587	104%	2,730	99%
	SCHS	9	2025/2026	2,445	230	442	2,657	2,587	103%	2,730	97%
Nova HS to open (students moved TBD)	SCHS	9	2026/2027	2,518	230	442	2,730	2,587	106%	2,730	100%

Notes:

Choice in and out based on current calculations

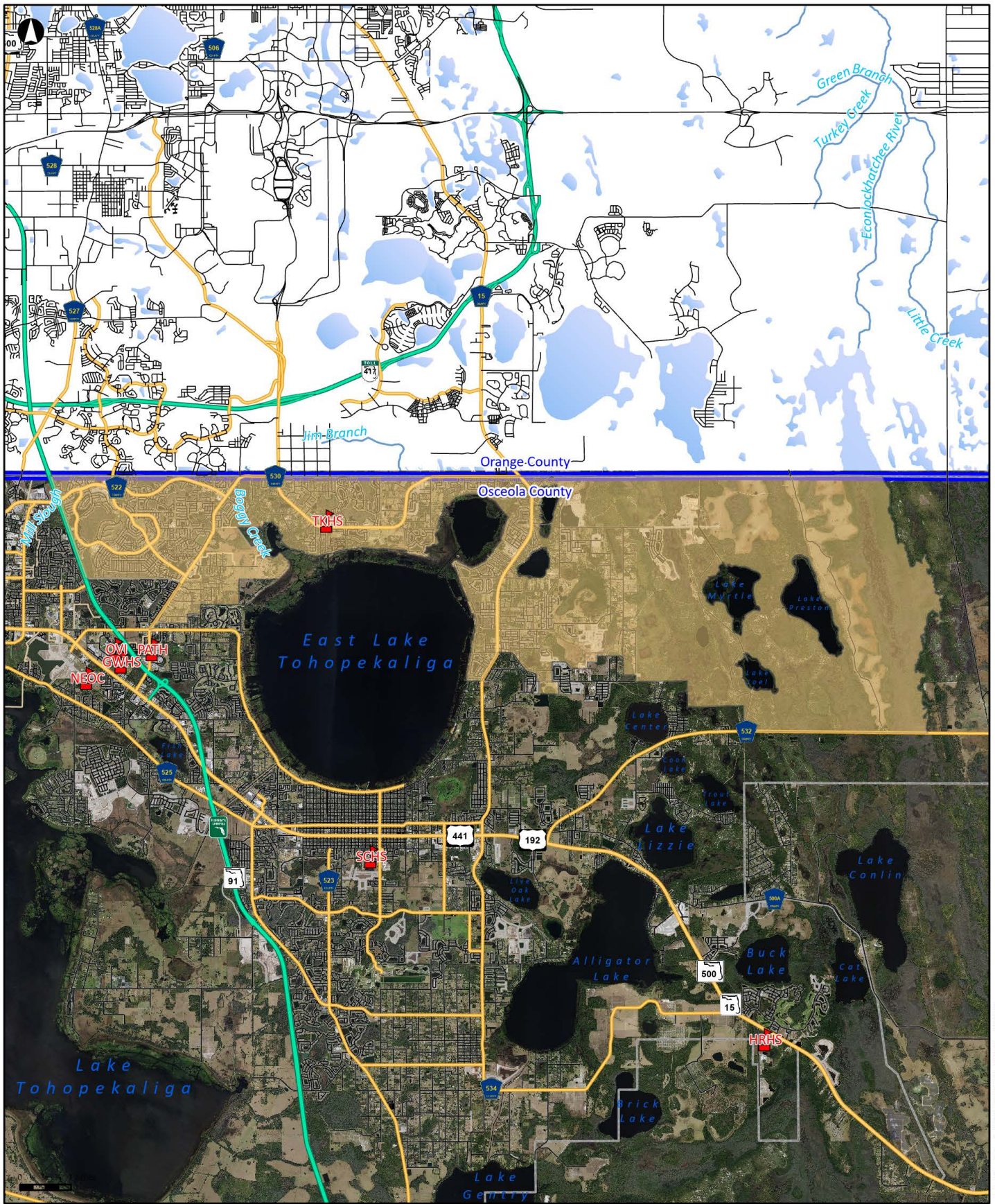
Assumes all Choice students in redistricting area continue to attend Choice school

Does not account for future redistricting which may occur for the 2024/25 or 2025/26 school years

There is the potential of a new Charter school to open for the 2024/25 school year within the NCES, NCMS, and HRHS attendance zones, this has the potential to change projections students in the Narcoossee Rd, Harmony Community, and Hickory Rd areas

High School "AAA" Nova Rd planned to open for SY2026/27 total boundary to be determined

***2023/2024 Proposed
Harmony High and Tohopekaliga High
Schools
Attendance Zone Boundaries***



Proposed Tohopekaliga High Attendance Zone
SY2023/24

Draft redistricting proposed for SY2324



Planning Services Department
 The School District of Osceola County, FL



Schools

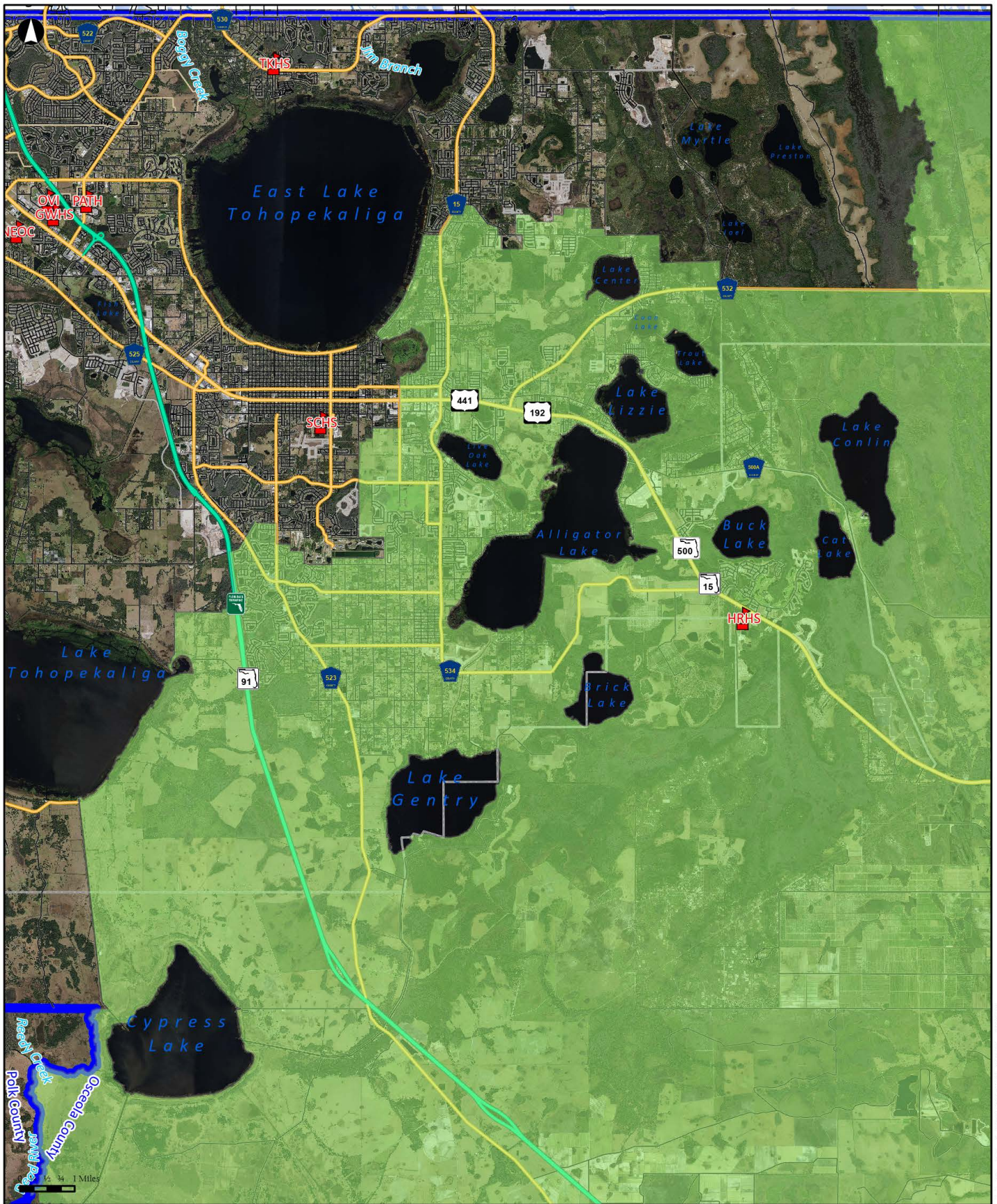


Harmony High



Tohopekaliga High

Disclaimer: All data, information, and maps are provided "as is" without any warranty or representation of accuracy, timeliness, or completeness. The School District of Osceola County, Florida (the "School District") cannot accept any responsibility for errors, omissions, or positional accuracy. The School District specifically disclaims any warranty, either express or implied, including, without limitation, the implied warranties of merchantability and fitness for a particular purpose. The burden of determining accuracy, timeliness, merchantability, and fitness for a particular use rests solely on the requestor, and the requestor assumes all risk as to quality and performance. In no event will the School District or its staff be liable for any direct, indirect, incidental, special, consequential, or other damages, including, without limitation, loss of profit, arising out of the use of the data, information, and maps even if the School District has been advised of the possibility of such damages. The requestor acknowledges and accepts the limitations of the data, information, and maps, including, without limitation, the fact that the data, information, and maps are dynamic and are in a constant state of maintenance, correction, and update.



**Proposed Harmony High
Attendance Zone
SY2023/24**

Draft redistricting proposed for SY2324



Planning Services Department
The School District of Osceola County, FL



Schools



Harmony High



St. Cloud High

Disclaimer: All data, information, and maps are provided "as is" without any warranty or representation of accuracy, timeliness, or completeness. The School District of Osceola County, Florida (the "School District") cannot accept any responsibility for errors, omissions, or positional accuracy. The School District specifically disclaims any warranty, either express or implied, including, without limitation, the implied warranties of merchantability and fitness for a particular purpose. The burden of determining accuracy, timeliness, merchantability, and fitness for a particular use rests solely on the requestor, and the requestor assumes all risk as to quality and performance. In no event will the School District or its staff be liable for any direct, indirect, incidental, special, consequential, or other damages, including, without limitation, loss of profit, arising out of the use of the data, information, and maps even if the School District has been advised of the possibility of such damages. The requestor acknowledges and accepts the limitations of the data, information, and maps, including, without limitation, the fact that the data, information, and maps are dynamic and are in a constant state of maintenance, correction, and update.

***2024/2025 Proposed
Harmony High and St. Cloud High
Schools
Attendance Zone Boundaries***



**Proposed St. Cloud High
Attendance Zone
SY2024/25**

Draft redistricting proposed for SY2425



Planning Services Department
The School District of Osceola County, FL



Schools

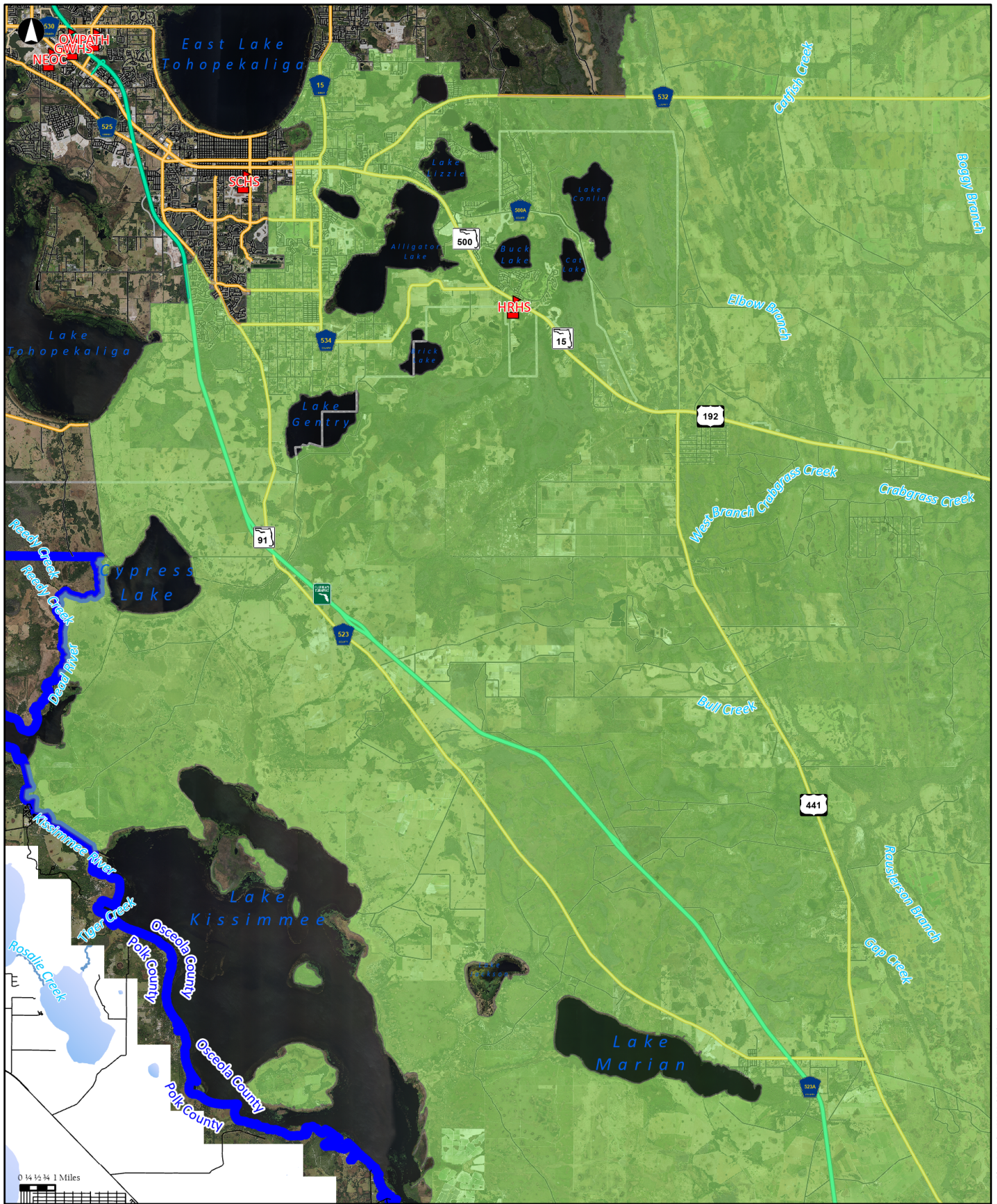


Harmony High



St. Cloud High

Disclaimer: All data, information, and maps are provided "as is" without any warranty or representation of accuracy, timeliness, or completeness. The School District of Osceola County, Florida (the "School District") cannot accept any responsibility for errors, omissions, or positional accuracy. The School District specifically disclaims any warranty, either express or implied, including, without limitation, the implied warranties of merchantability and fitness for a particular purpose. The burden of determining accuracy, timeliness, merchantability, and fitness for a particular use rests solely on the requestor, and the requestor assumes all risk as to quality and performance. In no event will the School District or its staff be liable for any direct, indirect, incidental, special, consequential, or other damages, including, without limitation, loss of profit, arising out of the use of the data, information, and maps even if the School District has been advised of the possibility of such damages. The requestor acknowledges and accepts the limitations of the data, information, and maps, including, without limitation, the fact that the data, information, and maps are dynamic and are in a constant state of maintenance, correction, and update.


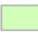



**Proposed Harmony High
Attendance Zone
SY2024/25**

Draft redistricting proposed for SY2425



Planning Services Department
The School District of Osceola County, FL

-  Schools
-  Harmony High
-  St Cloud High

Disclaimer: All data, information, and maps are provided "as is" without any warranty or representation of accuracy, timeliness, or completeness. The School District of Osceola County, Florida (the "School District") cannot accept any responsibility for errors, omissions, or positional accuracy. The School District specifically disclaims any warranty, either express or implied, including, without limitation, the implied warranties of merchantability and fitness for a particular purpose. The burden of determining accuracy, timeliness, merchantability, and fitness for a particular use rests solely on the requestor, and the requestor assumes all risk as to quality and performance. In no event will the School District or its staff be liable for any direct, indirect, incidental, special, consequential, or other damages, including, without limitation, loss of profit, arising out of the use of the data, information, and maps even if the School District has been advised of the possibility of such damages. The requestor acknowledges and accepts the limitations of the data, information, and maps, including, without limitation, the fact that the data, information, and maps are dynamic and are in a constant state of maintenance, correction, and update.

***Proposed Streets to Transfer
from Harmony High School
to Tohopekalia High School
2023/2024***

<i>Streets to Transfer from Harmony High to Tohopekaliga High</i>		
--	--	--

ABSHER LN	CUTKE RD	LAZIO ST
ABSHER RD	CYRILS DR	LENA ANN DR
APPENINE LOOP EAST	DAYPACK LN	LITTLE LN
APPENINE LOOP WEST	DEL WEBB BLVD	LONE PALM WAY
ARBORETUM ST	DOUGLAS FIR DR	LUISA CT
BARNSTORM WAY	EAST LAKE RESERVE BLVD	MARSH VIEW ST
BEGGS RD	EMILEE GRACE LN	MCMICHAEL RD
BLUE POND WAY	ENAYA ST	MIRAGE PL
BOOTLACE WAY	FLATWOOD ST	MOSSY OAK RD
CALASANS AVE	FOX HEDGE LN	N NARCOOSSEE RD
CAMILLA ST	GRASSLAND AVE	NARCOOSSEE DEL SOL BLVD
CANTANIA CT	GREENERY LN	NATURE VIEW RD
CEDAR POINT WAY	HICKORY DOWNS WAY	NAVAJO DR
CHASETREE LN	HONEYBELL WAY	OAK SHORE DR
CHERRY BLOSSOM LOOP	JACK BRACK RD	ODYSSEY TRCE
CHEYENNE DR	JONES RD	ORANGE HILL ST
CIRCLE ROCK WAY	JOURNEY PL	ORCHARD VIEW ST
CITRUS GROVE CT	LACY CT	OTTAWA DR
CLIFF WAY	S LAKE AVE	OUTBACK RD
COSTA DEL SOL DR	LANDMARK DR	OUTBACK RD WEST

Streets to Transfer from Harmony High to Tohopekaliga High

PADDLE RD	SABAL DR	TRAILBLAZE BND
PERUGIA LN	SABLE GLEN DR	TRAILS END CT
PIADA LN	SAMANTHA K CT	TUSCAROA AVE
PINE LILLY DR	SANDY SPRINGS CT	UMBRIA LN
PINE PRESERVE CT	SASSARI AVE	UNDERWOOD AVE
PINES END PL	SCOUT ST	VANGUARD CT
PLAYA DEL SOL LN	SHIMMERING SHORES LN	VENTURE WAY
POLARIS DR	SIBONEY ST	VICENZA ST
PROSPECT TRL	SICILY DR	VILLA ROSA AVE
QUEST ST	SILO DR	VOYAGER AVE
RACHEL LIN LN	SILVERBELL TRL	WALLIS LN
RAMBLING RD	SORRENTO BLVD EAST	WAYFARER CT
RANGER DR	SORRENTO BLVD WEST	WHITE BLOSSOM CIR
RAVENA AVE WEST	SPRINGER ST	WIGGINS RD
RAVENA AVE EAST	SUGARBUSH ST	WINDING PATH WAY
RAYLENE WAY	SUNSET RD	WYCLIFFE WAY
RIMINI DR	TIBER WAY	WYNELL ST
RIVER CREEK LN	TIMBER MEADOW WAY	YUKON ST
ROVER WAY	TIMBERLAND AVE	ZUNI RD
RUBY ROSE LN	TRACIE WAY	

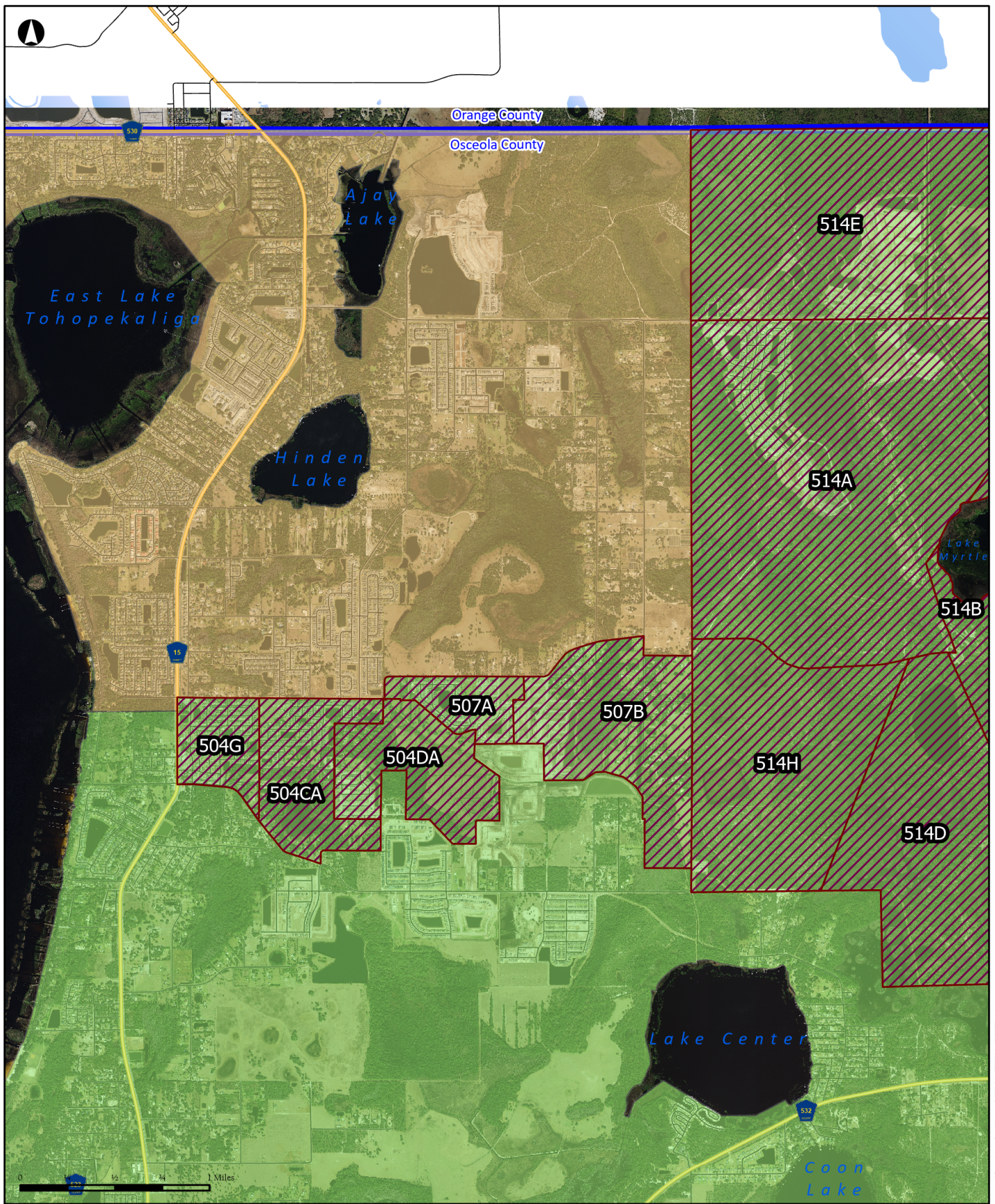
***Proposed Streets to Transfer
from Harmony High School
to St. Cloud High School
2024/2025***

Streets to Transfer from Harmony High to St. Cloud High

ALLEGRA CIR	EDGEHILL CT	OPAL CIR
ANN ARBOR CT	ELBIB DR	PINE TREE DR
ARROYO CIR	EXCALIBUR CT	PORTOFINO VISTA BLVD
BAJA DR	GATOR BAY LN	RENAISSANCE CT
BAY VIEW CT	GATOR BAY CREEK BLVD	RICHMONT LOOP
BAYVIEW LN	GEORGETOWN CT	SAN ISIDRO CIR
BELLWOOD WAY	GINA ANNE CT	SAWGRASS CREEK CIR
BELLWOOD CT	GISELLE CT	SEDFIELD CT
BLUE JAY CT	GLENWICK CT	SEDFIELD DR
CABO ROJO DR	GLENWICK DR	SEVEN OAKS DR
CAMELOT BLVD	GUENEVERE CT	SIR LANCELOT CIR
CANOE CIR	HEATHGATE DR	SOARING DR
CANOE CREEK RD	HEATHGATE CT	SUMMER RAYE CT
CAYMAN COVE CIR	HILLTOP PL	SWEETGUM ST
CHANNING DR	INTERIOR ST	SWEETHEART CT
CIALELLA PASS	KALEIGH CT	SWEETWATER BLVD
CLEAR BROOK PL	KELSEY LN	TALEGA DR
COUNTRYSIDE VIEW DR	KYLE DR	TIKIMBER WAY
COUNTRYSIDE VIEW CT	LEBA LN	TIMBER CREST DR
COVINGTON DR	MERLIN WAY	TRUJILO LN
CREEKWAY ST	MICAH CT	VEGA CREEK DR
CROSSING CREEK BLVD	MOCA DR	WHALEYS CANOE DR
DEATA CT	NEWBERRY WAY	WOOD WIND PL
DOVERSHIRE CT	NOAH CIR	WOODBINE DR
EAGLE LANDING DR	OLDE KINGS CT	
ALLEGRA CIR	OLDE QUEENS CT	

Alternate Plan

*2023/2024 Proposed Changes to
Harmony High and Tohopekaliga High
Schools
Attendance Zone Boundaries*



**Proposed Plan 2
Redistricting Area
HRHS to TKHS area zoom**

Draft redistricting proposed for SY2425



Planning Services Department
The School District of Osceola County, FL

- Harmony High
- Tohopekaliga High
- Draft_HRHStoTKHS

Disclaimer: All data, information, and maps are provided "as is" without any warranty or representation of accuracy, timeliness, or completeness. The School District of Osceola County, Florida (the "School District") cannot accept any responsibility for errors, omissions, or positional accuracy. The School District specifically disclaims any warranty, either express or implied, including, without limitation, the implied warranties of merchantability and fitness for a particular purpose. The burden of determining accuracy, timeliness, merchantability, and fitness for a particular use rests solely on the requestor, and the requestor assumes all risk as to quality and performance. In no event will the School District or its staff be liable for any direct, indirect, incidental, special, consequential, or other damages, including, without limitation, loss of profit, arising out of the use of the data, information, and maps even if the School District has been advised of the possibility of such damages. The requestor acknowledges and accepts the limitations of the data, information, and maps, including, without limitation, the fact that the data, information, and maps are dynamic and are in a constant state of maintenance, correction, and update.

Alternate Plan

Student Demographics

Alternate Proposed School by Study Area			
Study Area	Current HIGH School	Proposed HIGH School	School Year
504G	<i>Harmony High</i>	<i>Tohopekaliga High</i>	<i>2023/2024</i>
504CA	<i>Harmony High</i>	<i>Tohopekaliga High</i>	<i>2023/2024</i>
504DA	<i>Harmony High</i>	<i>Tohopekaliga High</i>	<i>2023/2024</i>
507A&B	<i>Harmony High</i>	<i>Tohopekaliga High</i>	<i>2023/2024</i>
514A	<i>Harmony High</i>	<i>Tohopekaliga High</i>	<i>2023/2024</i>
514E	<i>Harmony High</i>	<i>Tohopekaliga High</i>	<i>2023/2024</i>
514C	<i>Harmony High</i>	<i>Tohopekaliga High</i>	<i>2023/2024</i>
514F	<i>Harmony High</i>	<i>Tohopekaliga High</i>	<i>2023/2024</i>
514B	<i>Harmony High</i>	<i>Tohopekaliga High</i>	<i>2023/2024</i>
514D	<i>Harmony High</i>	<i>Tohopekaliga High</i>	<i>2023/2024</i>
514H	<i>Harmony High</i>	<i>Tohopekaliga High</i>	<i>2023/2024</i>

Alternate HRHS to TKHS					
Student Counts by Study Area (Oct FTE 2022/23 Students)					
Study Area	9th*	10th	11th	12th	Total
504G	27	21	23	14	85
504CA	13	12	5	15	45
504DA	8	15	12	5	40
507A&B	9	13	6	11	39
514A	0	0	0	0	0
514E	0	0	0	0	0
514C	0	0	0	0	0
514F	0	0	0	0	0
514B	0	0	0	0	0
514D	0	0	0	0	0
514H	0	0	0	0	0
Total	57	61	46	46	209

**Based on Current 2022/2023 7th grade enrollment.
All counts from the October 14, 2022, Student Geocode*

Alternate HRHS to TKHS Student School of Attendance by Study Area – Current High School						
Enrolled School	504G	504CA	504DA	507A&B	514**	Total
Incomplete Enrollment	-	-	1	-	-	1
Family Empowerment Scholarship	2	-	1	-	-	3
Gateway High School	1	-	-	-	-	1
Harmony High School	40	17	26	22	-	105
NeoCity Academy	1	1	-	-	-	2
Osceola Technical College: Kissimmee Campus	1	-	-	-	-	1
Osceola Virtual Secondary School	-	2	-	-	-	2
Professional and Technical High School	1	-	1	1	-	3
St Cloud High School	2	-	1	-	-	3
Tohopekaliga High School	10	11	1	7	-	29
Zenith Academy	-	1	-	-	-	1
Total	58	32	31	30	-	151

Alternate Student School of Attendance by Study Area – Rising High School						
Enrolled School	504G	504CA	504DA	507A&B	514**	Total
Incomplete Enrollment	-	-	1	-	-	1
Family Empowerment Scholarship	-	1	-	-	-	1
Home School	-	-	-	1	-	1
Narcoossee Middle School	25	11	7	8	-	51
Osceola County School for the Arts	-	1	-	-	-	1
Renaissance Charter at Boggy Creek	1	-	-	-	-	1
St. Cloud Middle School	1	-	-	-	-	1
Total	27	13	8	9	-	57

**Study Area 514 sub areas A, B, C, D, E, F, and H
All counts from the October 14, 2022, Student Geocode

Alternate Plan

Projected Enrollment

Alternate Plan

HRHS to TKHS and SCHS SY2324	School	Plan Area	Year	Grades 9-12	CHOICE Sending	CHOICE Receiving	NET TOTAL 9-12	Functional Capacity	Utilization	Functional Capacity W/ Relocatable	Functional Utilization W/ Relocatable
<i>SB Member: 5</i>	HRHS	10	2023/2024	3,530	629	148	3,049	2,781	110%	2,894	105%
	HRHS	10	2023/2024	3,180	567	148	2,761	2,781	99%	2,894	95%
	HRHS	10	2024/2025	3,085	580	148	2,653	2,781	95%	2,894	92%
	HRHS	10	2025/2026	3,364	594	148	2,918	2,781	105%	2,894	101%
<i>Nova HS to open (students moved TBD)</i>	HRHS	10	2026/2027	3,789	594	148	3,343	2,781	120%	2,894	115%
HRHS to TKHS SY2324	School	Plan Area	Year	Grades 9-12	CHOICE Sending	CHOICE Receiving	NET TOTAL 9-12	Functional Capacity	Utilization	Functional Capacity W/ Relocatable	Functional Utilization W/ Relocatable
<i>SB Member: 5</i>	TKHS	4	2023/2024	2,990	504	276	2,762	2,916	95%	2,916	95%
	TKHS	4	2023/2024	3,233	524	244	2,953	2,916	101%	2,916	101%
	TKHS	4	2024/2025	3,235	486	244	2,993	2,916	103%	2,916	103%
	TKHS	4	2025/2026	3,233	472	244	3,005	2,916	103%	2,916	103%
<i>Nova HS to open (students moved TBD)</i>	TKHS	4	2026/2027	3,267	472	244	3,039	2,916	104%	2,916	104%
HRHS to SCHS SY2425	School	Plan Area	Year	Grades 9-12	CHOICE Sending	CHOICE Receiving	NET TOTAL 9-12	Functional Capacity	Functional Utilization	Functional Capacity W/ Relocatable	Functional Utilization W/ Relocatable
<i>SB Member: 5</i> <i>Wing Addition +525 StuSta</i>	SCHS	9	2023/2024	2,075	234	489	2,330	2,086	112%	2,229	105%
	SCHS	9	2024/2025	2,037	215	489	2,311	2,587	89%	2,730	85%
	SCHS	9	2024/2025	2,512	257	442	2,697	2,587	104%	2,730	99%
	SCHS	9	2025/2026	2,445	230	442	2,657	2,587	103%	2,730	97%
<i>Nova HS to open (students moved TBD)</i>	SCHS	9	2026/2027	2,518	230	442	2,730	2,587	106%	2,730	100%

Notes:

Choice in and out based on current calculations

Assumes all Choice students in redistricting area continue to attend Choice school

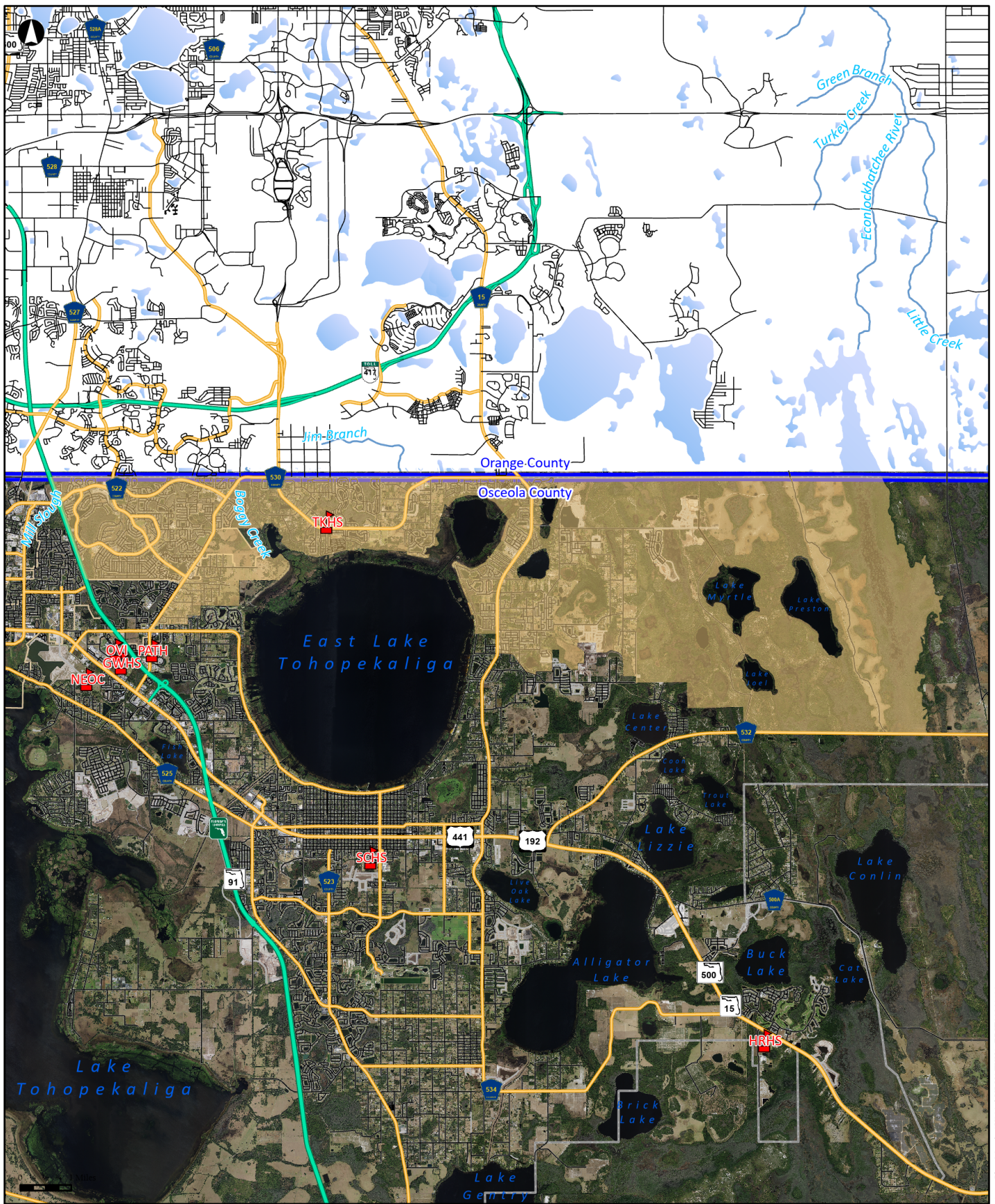
Does not account for future redistricting which may occur for the 2024/25 or 2025/26 school years

There is the potential of a new Charter school to open for the 2024/25 school year within the NCES, NCMS, and HRHS attendance zones, this has the potential to change projections students in the Narcoossee Rd, Harmony Community, and Hickory Rd areas

High School "AAA" Nova Rd planned to open for SY2026/27 total boundary to be determined

Alternate Plan

2023/2024 Proposed
Harmony High and Tohopekaliga High
Schools
Attendance Zone Boundaries







**Alternate Plan
Proposed Tohopekaliga High
Attendance Zone
SY2023/24**

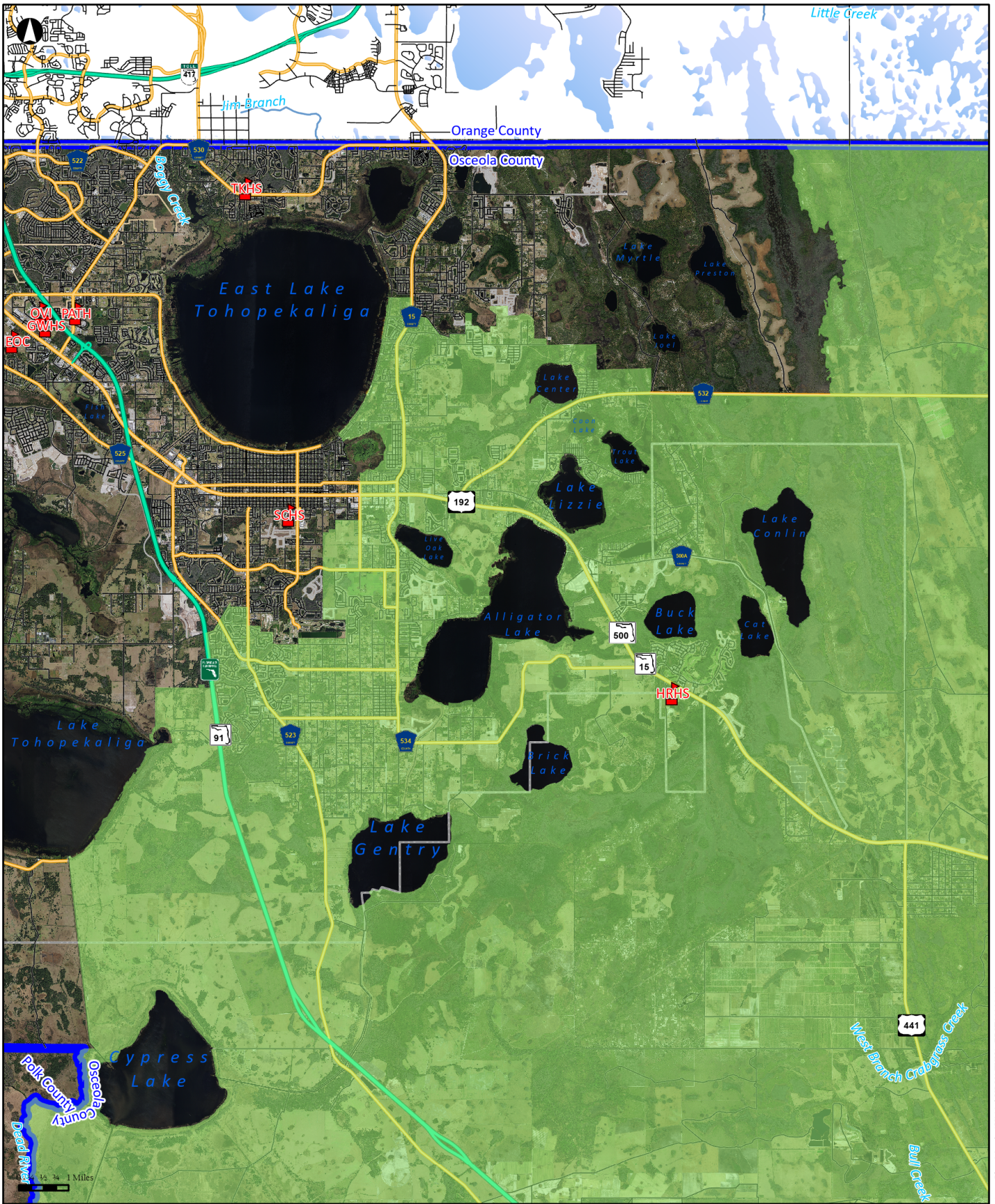
Draft redistricting proposed for SY2425



Planning Services Department
The School District of Osceola County, FL

-  Schools
-  Harmony High
-  Tohopekaliga High
-  Draft_HRHS to TKHS

Disclaimer: All data, information, and maps are provided "as is" without any warranty or representation of accuracy, timeliness, or completeness. The School District of Osceola County, Florida (the "School District") cannot accept any responsibility for errors, omissions, or positional accuracy. The School District specifically disclaims any warranty, either express or implied, including, without limitation, the implied warranties of merchantability and fitness for a particular purpose. The burden of determining accuracy, timeliness, merchantability, and fitness for a particular use rests solely on the requestor, and the requestor assumes all risk as to quality and performance. In no event will the School District or its staff be liable for any direct, indirect, incidental, special, consequential, or other damages, including, without limitation, loss of profit, arising out of the use of the data, information, and maps even if the School District has been advised of the possibility of such damages. The requestor acknowledges and accepts the limitations of the data, information, and maps, including, without limitation, the fact that the data, information, and maps are dynamic and are in a constant state of maintenance, correction, and update.



**Alternate Plan
Proposed Harmony High
Attendance Zone
SY2023/24**

Drafts redistricting proposed for SY2425



Planning Services Department
The School District of Osceola County, FL



Schools

Harmony High

Tohopekaliga High

Draft_HRHStoTKHS

Disclaimer: All data, information, and maps are provided "as is" without any warranty or representation of accuracy, timeliness, or completeness. The School District of Osceola County, Florida (the "School District") cannot accept any responsibility for errors, omissions, or positional accuracy. The School District specifically disclaims any warranty, either express or implied, including, without limitation, the implied warranties of merchantability and fitness for a particular purpose. The burden of determining accuracy, timeliness, merchantability, and fitness for a particular use rests solely on the requestor, and the requestor assumes all risk as to quality and performance. In no event will the School District or its staff be liable for any direct, indirect, incidental, special, consequential, or other damages, including, without limitation, loss of profit, arising out of the use of the data, information, and maps even if the School District has been advised of the possibility of such damages. The requestor acknowledges and accepts the limitations of the data, information, and maps, including, without limitation, the fact that the data, information, and maps are dynamic and are in a constant state of maintenance, correction, and update.

Alternate Plan

Proposed Streets to Transfer from Harmony High School to Tohopekalia High School

<i>Alternate Plan Streets to Transfer from Harmony High to Tohopekaliga High</i>		
ABSHER LN	FOX HEDGE LN	PADDLE RD
ABSHER RD	GRASSLAND AVE	PERUGIA LN
APPENINE LOOP EAST	GREENERY LN	PIADA LN
APPENINE LOOP WEST	HICKORY DOWNS WAY	PINE PRESERVE CT
ARBORETUM ST	HONEYBELL WAY	PINES END PL
BARNSTORM WAY	JACK BRACK RD	PLAYA DEL SOL LN
BEGGS RD	JONES RD	POLARIS DR
BLUE POND WAY	JOURNEY PL	PROSPECT TRL
BOOTLACE WAY	LAZIO ST	QUEST ST
CAMILLA ST	LITTLE LN	RAMBLING RD
CANTANIA CT	LONE PALM WAY	RANGER DR
CEDAR POINT WAY	LUISA CT	RAVENA AVE WEST
CHASETREE LN	MARSH VIEW ST	RAVENA AVE EAST
CHERRY BLOSSOM LOOP	MCMICHAEL RD	RIMINI DR
CIRCLE ROCK WAY	MIRAGE PL	RIVER CREEK LN
CITRUS GROVE CT	MOSSY OAK RD	ROVER WAY
CLIFF WAY	N NARCOOSSEE RD	RUBY ROSE LN
COSTA DEL SOL DR	NARCOOSSEE DEL SOL BLVD	SABAL DR
CUTKE RD	NATURE VIEW RD	SABLE GLEN DR
CYRILS DR	ODYSSEY TRCE	SANDY SPRINGS CT
DAYPACK LN	ORANGE HILL ST	SASSARI AVE
DEL WEBB BLVD	ORCHARD VIEW ST	SCOUT ST
DOUGLAS FIR DR	OUTBACK RD	SHIMMERING SHORES LN
FLATWOOD ST	OUTBACK RD WEST	SIBONEY ST

<i>Alternate Plan Streets to Transfer from Harmony High to Tohopekaliga High cont.</i>		
SICILY DR	TRACIE WAY	WALLIS LN
SILO DR	TRAILBLAZE BND	WAYFARER CT
SILVERBELL TRL	TRAILS END CT	WHITE BLOSSOM CIR
SORRENTO BLVD EAST	UMBRIA LN	WIGGINS RD
SORRENTO BLVD WEST	UNDERWOOD AVE	WINDING PATH WAY
SPRINGER ST	VANGUARD CT	WYCLIFFE WAY
SUGARBUSH ST	VENTURE WAY	WYNELL ST
TIBER WAY	VICENZA ST	ZUNI RD
TIMBER MEADOW WAY	VILLA ROSA AVE	
TIMBERLAND AVE	VOYAGER AVE	